

September 26, 2022



Warren Woods Public Schools Board of Education

2022 M-Step Report

TONIGHT'S OBJECTIVES:

- ▶ Where are we headed?
- ▶ Purpose of Local & State Assessments
 - ▶ 2022 State Assessment Results



SCAN ME



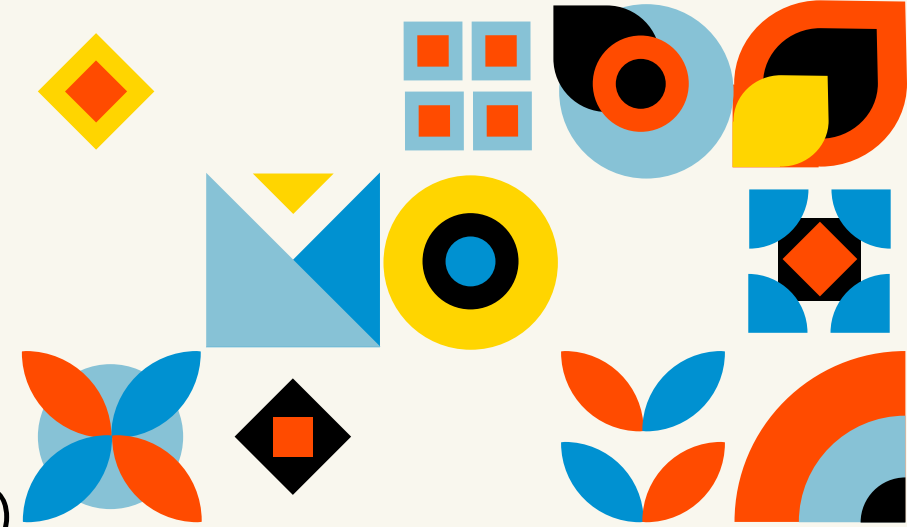


- By June 2026, the District M-Step proficiency for gr. 3-7 will reach or exceed the State's target of 60%.
 - Strive for ~5+% improvement each year
- MATH – 47.55% Proficient
 - Aim for ~5-6+% growth each year



What's the Difference?

Local vs. State Assessments



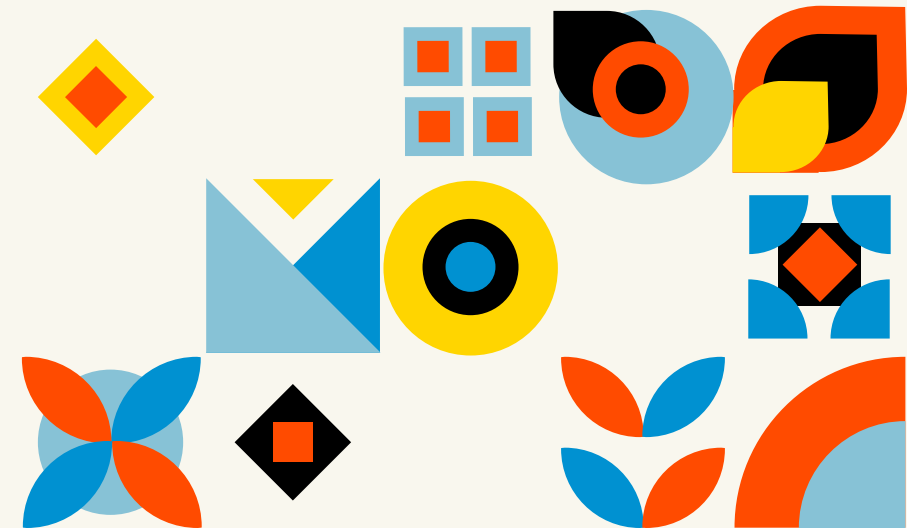
- ▶ Purpose of NWEA (Intervals: Multiple X's per yr.)
 - ▶ Measures growth & progress
 - ▶ Planning:
 - ▶ Teachers: To identify patterns in learning for students or groups of students
 - ▶ Administrators: To determine progress toward milestones, evaluating program impact, & predicting outcomes for state accountability tests
 - ▶ Monitoring: To monitor student achievement – where students are starting – and growth over time
 - ▶ for parents, interim data can help them understand how their child is progressing, what areas he or she needs extra help in – and where he or she is doing well
 - ▶ Responding: To target additional resources for students and teachers
- ▶ State Benchmark Assessments (Periodic: SPRING)
 - ▶ Measures achievement (proficiency)
 - ▶ To establish baseline achievement data & measure progress toward a standard or set of academic standards and goals.

2022 State Assessment Results

ELA

Percent Proficient

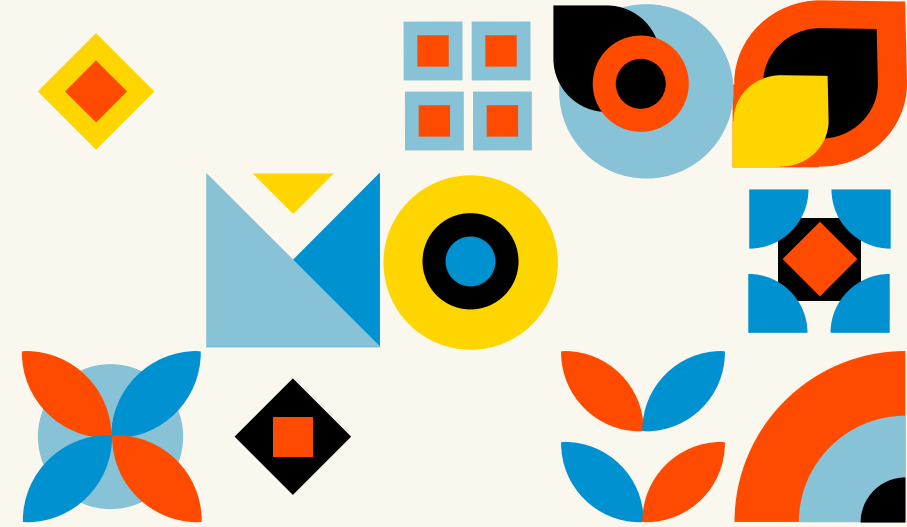
	2019	2021	2022
Grade 3	41.8	29.8	40.2
Grade 4	46.2	36.4	35.4
Grade 5	40.9	42.8	36.8
Grade 6	39	29.4	32.7
Grade 7	38.9	27.4	27.8
PSAT 8/9	59.4	54.3	49.6
SAT	37.7	43.1	43.9



Starting from Where We Are

M-STEP 2022

ELA



	WWPS		MACOMB		STATE	
	2022 % Proficient	Change 2021 to 2022	2022 % Proficient	Change 2021 to 2022	2022 % Proficient	Change 2021 to 2022
Grade 3	40.2	10.4%	43.9	4.8%	41.6	-1.2%
Grade 4	35.4	-1%	43.7	3.3%	43.4	-0.8%
Grade 5	36.8	-6%	44.7	3.4%	43.1	-0.6%
Grade 6	32.7	3.3%	38.6	2.2%	37.6	-1%
Grade 7	27.8	0.4%	37.7	0.1%	37.7	-3%
PSAT 8/9	49.6	-4.7%	61.7	0%	59.7	-3.9%
SAT	43.9	0.8%	50.5	-0.5%	51.6	-5%



M-STEP 2022

MATH

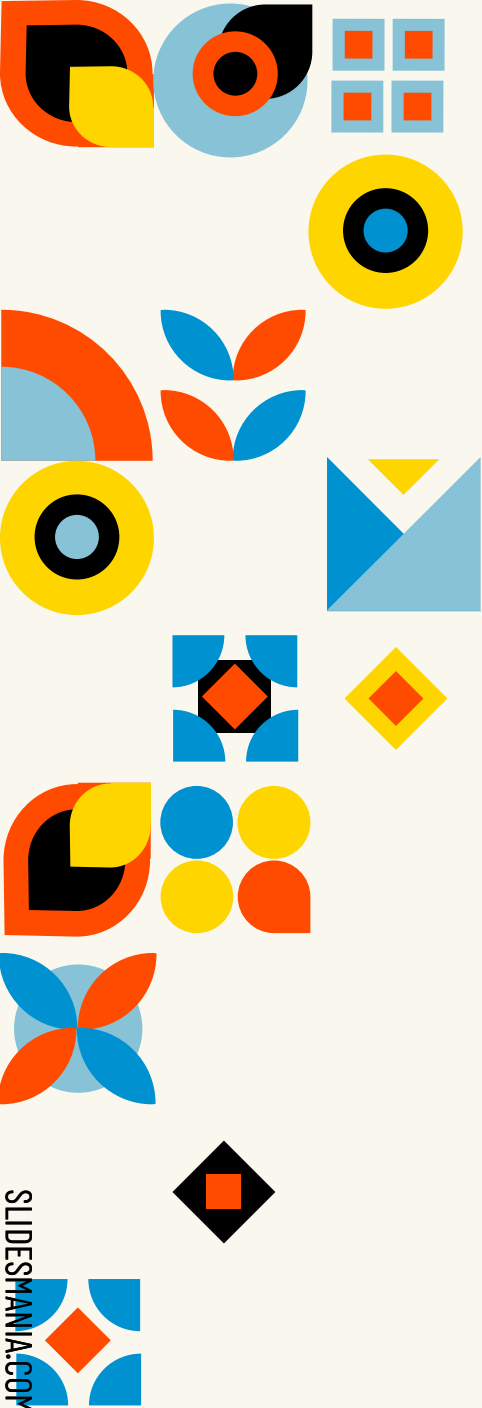
Percent Proficient

	WWPS		
	2019	2021	2022
Grade 3	39%	24.6%	32.3%
Grade 4	31.7%	23.4%	24.7%
Grade 5	30.5%	22.7%	22.1%
Grade 6	34.3%	15.3%	19.6%
Grade 7	26.1%	21.8%	16.1%
PSAT 8/9	39%	22.8%	29.3%
SAT	20.2%	21.1%	23.5%

M-STEP 2022

MATH

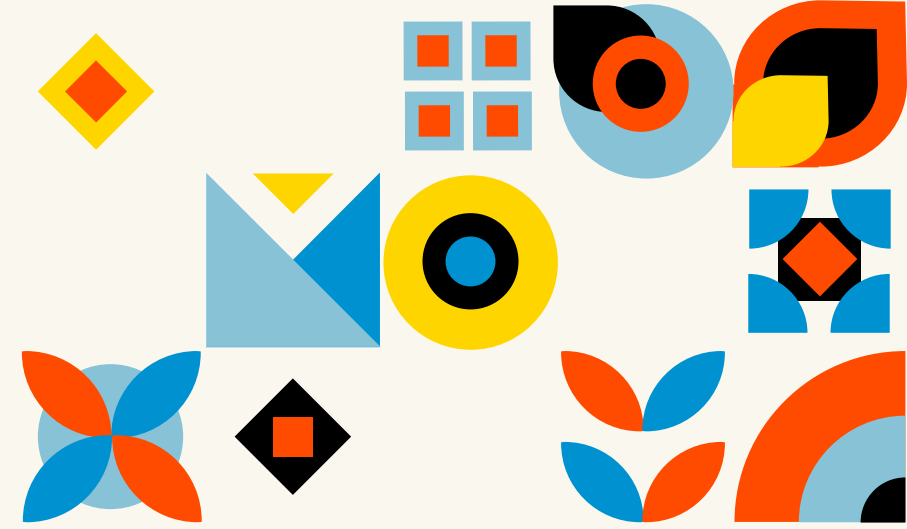
	WWPS		MACOMB		STATE	
	2022 % Proficient	Change 2021 to 2022	2022 % Proficient	Change 2021 to 2022	2022 % Proficient	Change 2021 to 2022
Grade 3	32.3	7.7%	44.6%	6.7%	41.5%	-0.8%
Grade 4	24.7	1.3%	34.1%	4.4%	36.7%	0.2%
Grade 5	22.1	-0.6%	31.9%	5.1%	30%	0.4%
Grade 6	19.6	4.3%	28.6%	2.9%	28.4%	-0.2%
Grade 7	16.1	-5.7%	30.2%	1.5%	30.2%	-2.1%
PSAT 8/9	29.3	6.5%	36.6%	4.5%	36.2%	0.2%
SAT	23.5	2.4%	27%	-1.5%	30%	-4.5%



District / Building Response

- ▶ Back to Basics
 - ▶ Addressing the Needs of the Whole Child
 - ▶ Systems of Support for Behavior
 - ▶ Curricular Alignment & Instructional Best Practices
 - ▶ Parent Partnerships





Thank YOU!